

PRESSURE RELIEF VALVE, PILOT OPERATED, SANDWICH PLATE TYPE UZPR6

NS 6 | up to 31,5 MPa | up to 60 dm³/min

WK 494 060

The pressure relief valve, pilot operated, sandwich plate design type **UZPR 6...** is used to limit pressure in hydraulic systems.

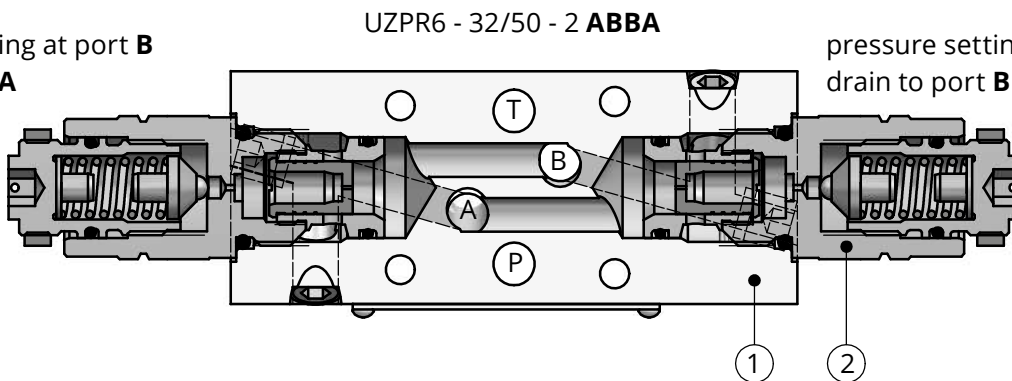


DESCRIPTION OF OPERATION

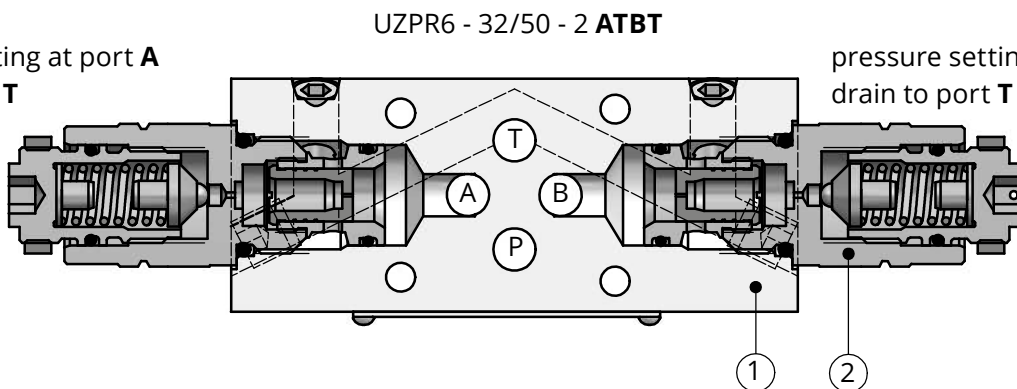
The pressure relief valve type **UZPR 6...** consists of the housing (1) in which the cartridge relief valves (2), pilot operated are installed. Due to appropriate

combination of connection lines in the housing (1) different versions of the valve according to hydraulic schemes shown on page 2 can be obtained.

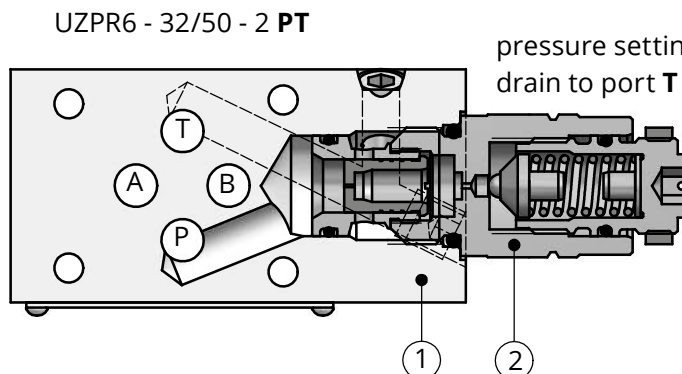
pressure setting at port **B**
drain to port **A**



pressure setting at port **A**
drain to port **T**



UZPR6 - 32/50 - 2 **PT**



TECHNICAL DATA

Hydraulic fluid	mineral oil	
Required filtration	up to 16 µm	
Recommended filtration	up to 10 µm	
Nominal fluid viscosity	37 mm ² /s at temperature 55°C	
Viscosity range	2,8 up to 380 mm ² /s	
Fluid temperature range (in a tank)	recommended	40° C up to 55°C
	max	-20° C up to +70° C
Ambient temperature range	-20° C up to +70° C	
Max operating pressure	31,5 MPa	
Settable pressure ranges	5 MPa; 10 MPa; 20 MPa; 31,5 MPa	
Maximum set pressure	31,5 MPa	
Maximum flow	60 dm³ / min	
Weight	1,2 or 1,5 kg (in relation to valve version)	

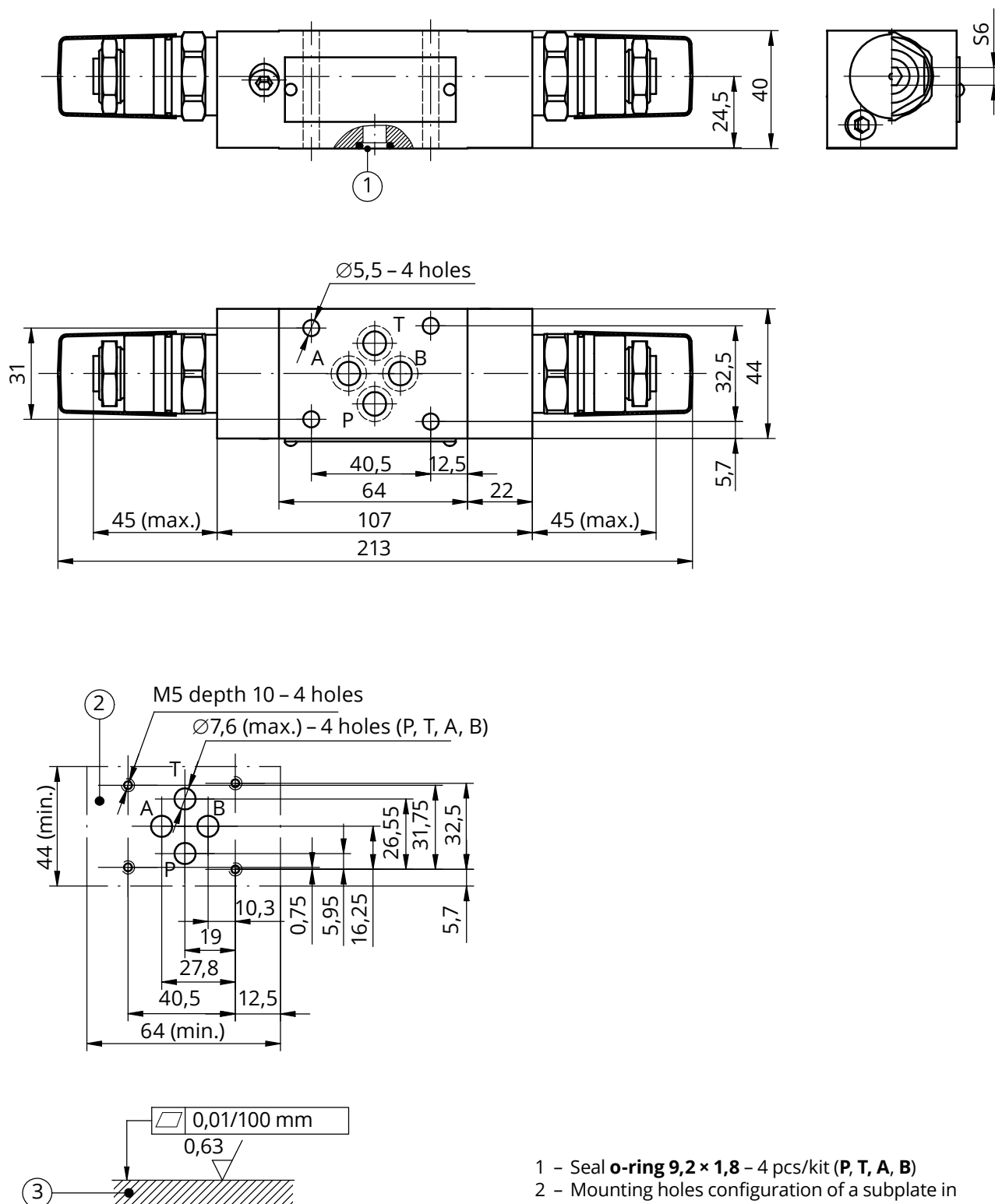
SCHEMES

Hydraulic schemes of valves type **UZPR6...**

<p>version UZPR6...AT... outlet connection (receiver)</p> <p>inlet connection (subplate)</p>	<p>version UZPR6...ATBT... outlet connection (receiver)</p> <p>inlet connection (subplate)</p>
<p>version UZPR6...BT... outlet connection (receiver)</p> <p>inlet connection (subplate)</p>	<p>version UZPR6...ABBA... outlet connection (receiver)</p> <p>inlet connection (subplate)</p>
<p>version UZPR6...PT... outlet connection (receiver)</p> <p>inlet connection (subplate)</p>	

OVERALL AND CONNECTION DIMENSIONS

versions: UZPR6...ABBA...; ...ATBT...



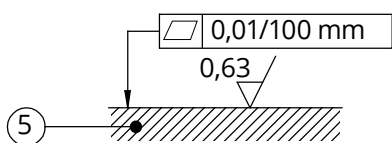
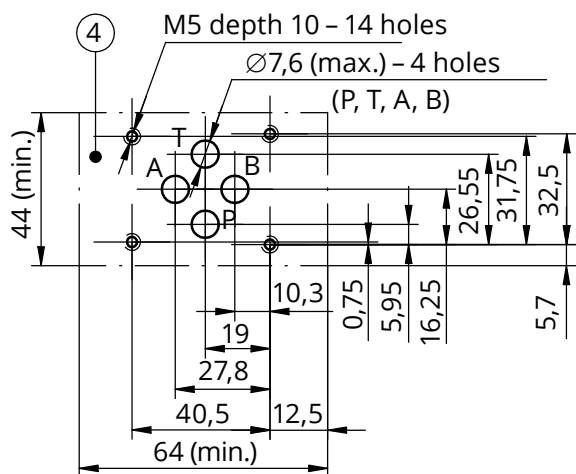
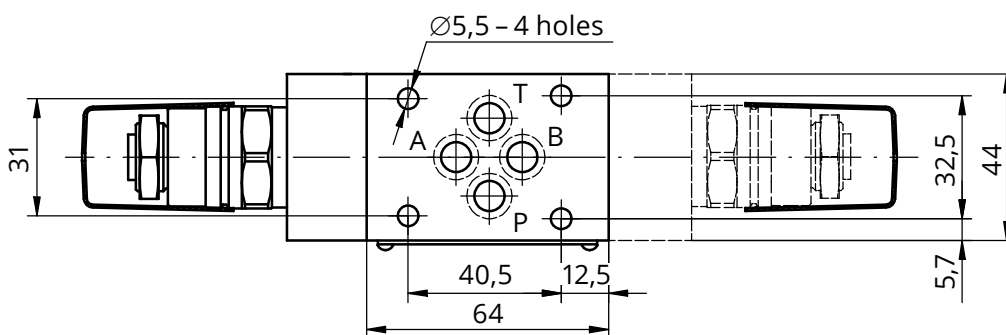
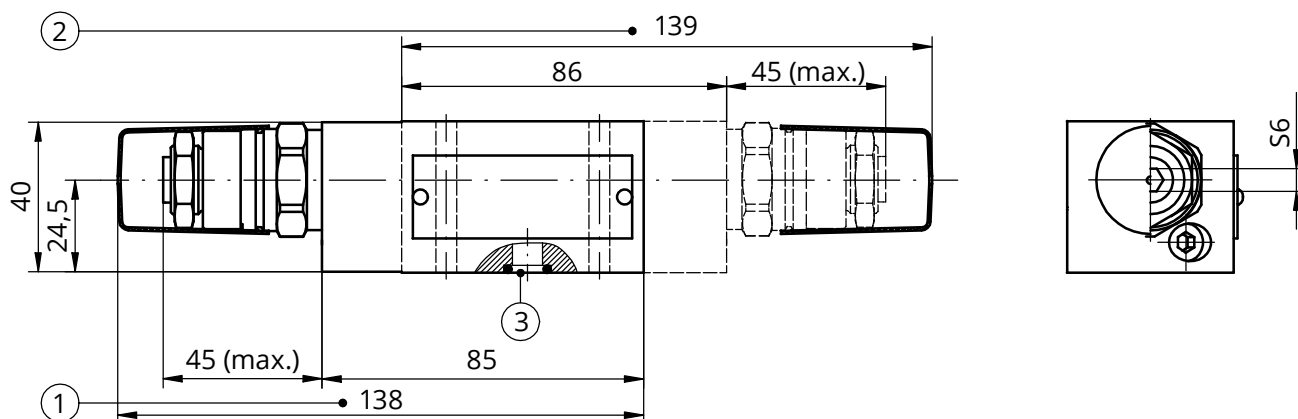
- 1 - Seal **o-ring 9,2 × 1,8** - 4 pcs/kit (**P, T, A, B**)
- 2 - Mounting holes configuration of a subplate in accordance with the standards listed below:
 - **CETOP RP 121H** - symbol **CETOP 4.2-4-03** (nominal size **CETOP 03**)
 - **ISO 4401** - symbol **ISO 4401-03-02-0-94** fixing screws **M5 × L*** - **10.9** - 4 pcs/kit in accordance with **PN - EN ISO 4762** tightening torque **Md = 9 Nm**
- 3 - Required surface finish of a subplate

NOTE:

(*) - Required length of the screws **L** is related to type and the number of hydraulic components sandwich fitted

OVERALL AND CONNECTION DIMENSIONS

versions: UZPR6...AT...; ...BT...; ...PT...



- 1 - Overall dimension for the valve version UZPR6...AT...
- 2 - Overall dimension for the valve versions: UZPR6...PT... ; UZPR6...BT...
- 3 - Seal o-ring **9,2 × 1,8** - 4 pcs/kit (**P, T, A, B**)
- 4 - Mounting holes configuration of a subplate in accordance with the standards listed below:
 - CETOP RP 121H - symbol **CETOP 4.2-4-03** (nominal size **CETOP 03**)
 - ISO 4401 - symbol **ISO 4401-03-02-0-94** fixing screws **M5 × L*** - 4 pcs/kit in accordance with **PN - EN ISO 4762** tightening torque **Md = 9 Nm**
- 5 - Required surface finish of a subplate

NOTE:

(*) - Required length of the screws **L** is related to type and the number of hydraulic components sandwich fitted

HOW TO ORDER

UZPR 6 - / - - - *

Nominal size (NS)
NS6 = 6

Series number
(30 - 39) - connection
and installation dimensions
unchanged = 3X
series 32 = 32

Settable pressure range
up to 5 MPa = 50
up to 10 MPa = 100
up to 20 MPa = 200
up to 31,5 MPa = 315

Adjustment element
set screw with internal hexagon = 2

Relief function for flow direction
(hydraulic schemes according to page 2)
from A to T = AT
from B to T = BT
from **P** to **T** = **PT**
from A to T and from B to T = ATBT
from A to B and from B to A = ABBA

Sealing
NBR (for fluids on mineral oil base) = no code
FKM (for fluids on phosphate ester base) = V

Further requirements in clear text
(to be agreed with the manufacturer)

NOTES:

The pressure relief valve should be ordered according to the above coding.

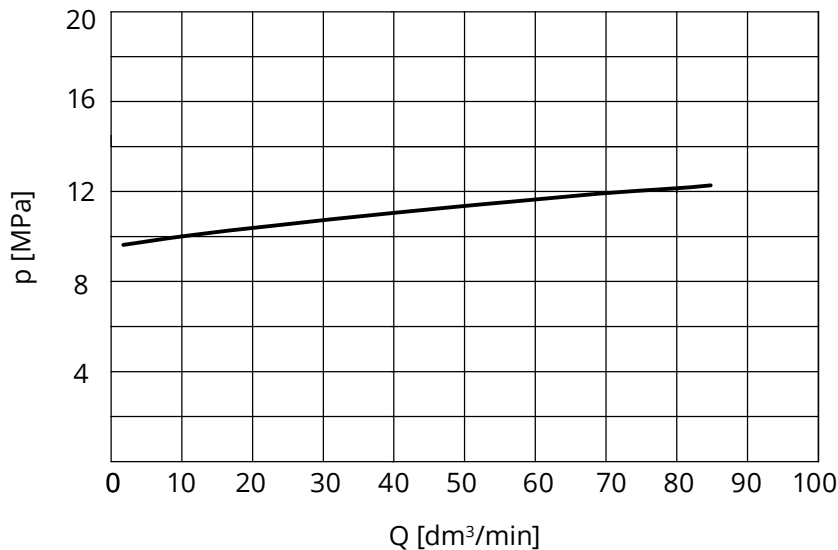
The symbols in bold are the preferred versions available in short delivery time.

Coding example: UZPR6 - 32/315 - 2 PT

PERFORMANCE CURVES

measured at viscosity $\nu = 41 \text{ mm}^2/\text{s}$ and temperature $t = 50 \text{ }^\circ\text{C}$

Characteristic diagrams of operating pressure in relation to flow **p (Q)**



SUBPLATES AND FIXING SCREWS

Subplates must be ordered according to catalogue sheet **WK 496 480**. Subplate symbols:

- G 341/01** – threaded connections **G 1/4**
- G 342/01 – threaded connections G 3/8
- G 502/01 – threaded connections G 1/2
- G 341/02 – threaded connections M14 × 1,5
- G 342/02 – threaded connections M16 × 1,5

Subplates and screws fixing the relief valve **M5 × L*** – **10,9** – 4 pcs/kit in accordance with **PN - EN ISO 4762** must be ordered separately. Tightening torque **Md = 9 Nm**

NOTES:

(*) – Required length of the screws L is related to type and the number of hydraulic components sandwich fitted.

The subplate symbol in bold is the preferred version available in short delivery time.