

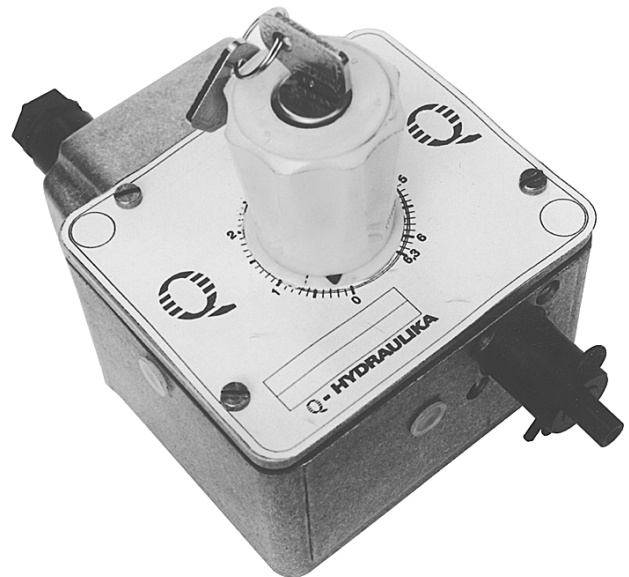


PRESSURE SWITCH TYPE HED 2

**WK
450 239**

up to 40 MPa

04.1999r.



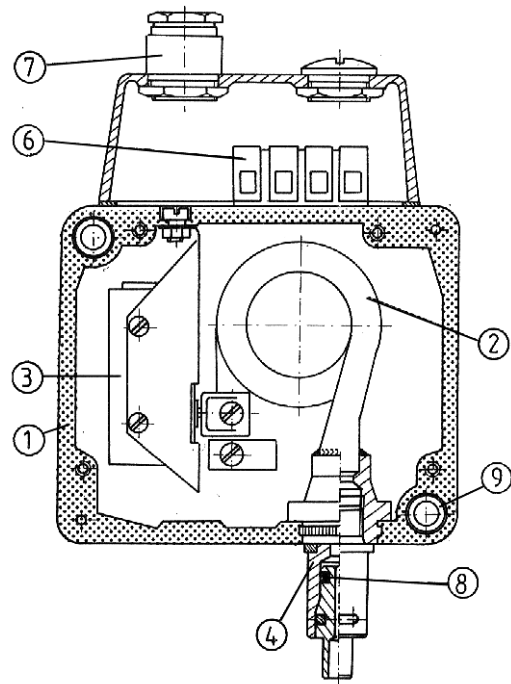
Pressure switch type HED 2 is used to switch an electrical circuit on and off in relation to the given pressure value of an oil or another operating medium.

DESCRIPTION OF OPERATION

Increasing pressure is supplied by a dumping tube via connector Stecko 4 sealed with the rubber ring 8. This pressure affects the bourdon tube 2 causing its deformation. As soon as the set pressure is reached, the bourdon tube actuates the micro switch 3 by means of the attached operating lever. Position of the micro switch and then time of its action may be adjusted steplessly by means of a lockable handknob. Connection of the pressure switch with an external electrical equipment is made by conductors attached to the terminal strip 6 and the gland 7 - in basic version.

The switch is susceptible to vibration and for that reason it is mounted with the buffers 9.

The pressure switches are designed for the following pressure ranges : 2.5, 6.3, 10, 20, 40 MPa.



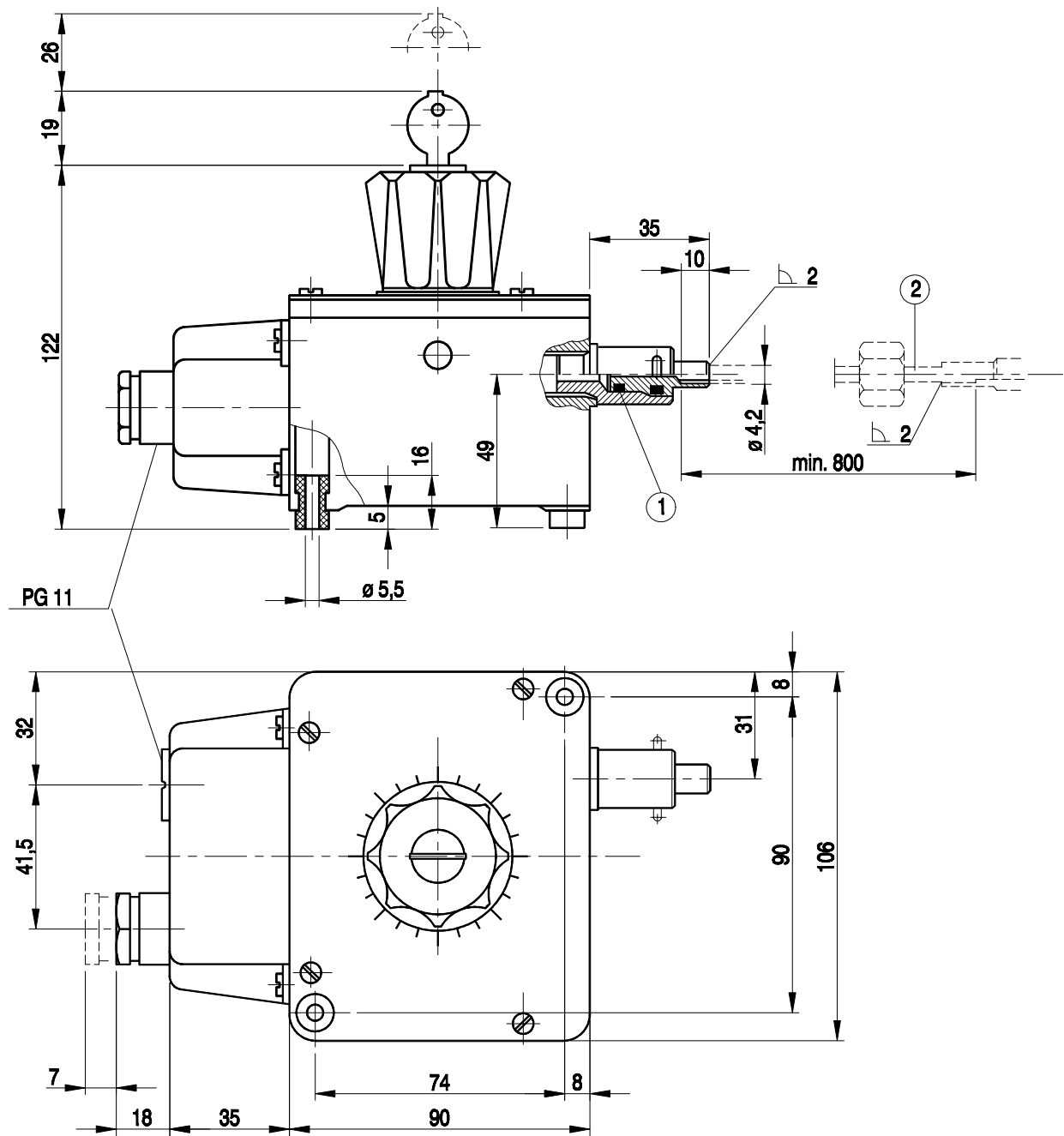
TECHNICAL DATA

Operatin medium	Mineral oil, phosphate ester, gas, air			
Electrical connection with a gland	PG 11 ; max conductor dia = 8			
Insulation	Electrical connection with a gland			
	IP 55		IP 54	
Mounting position	Optional Fixing by 2 bolts M5 x 20 - 5.8 per PN-85/M - 82215 (DIN - 384)			
Switching accuracy	± 1 %			
Switching frequency	30/min			
Contact loading	AC voltage		DC voltage	
	[V]	[A]	[V]	[A]
	460	10	25 125 250	1.0 0.2 0.1
Weight	1 kg			

Setting ranges [MPa]				Fixed switching pressure difference [MPa]	Pressure rating [MPa]	Maximum operating pressure [MPa]
Decreasing pressure		Increasing pressure				
min	max	min	max			
0.15	2.5	0.2	2.6	~ 0.05	2.5	3
0.4	6.3	0.5	6.4	~ 0.10	6.3	7
0.6	10	0.75	10.15	~ 0.15	10	11
1	20	1.4	20.4	~ 0.40	20	21
2	40	2.6	40.6	~ 0.60	40	42

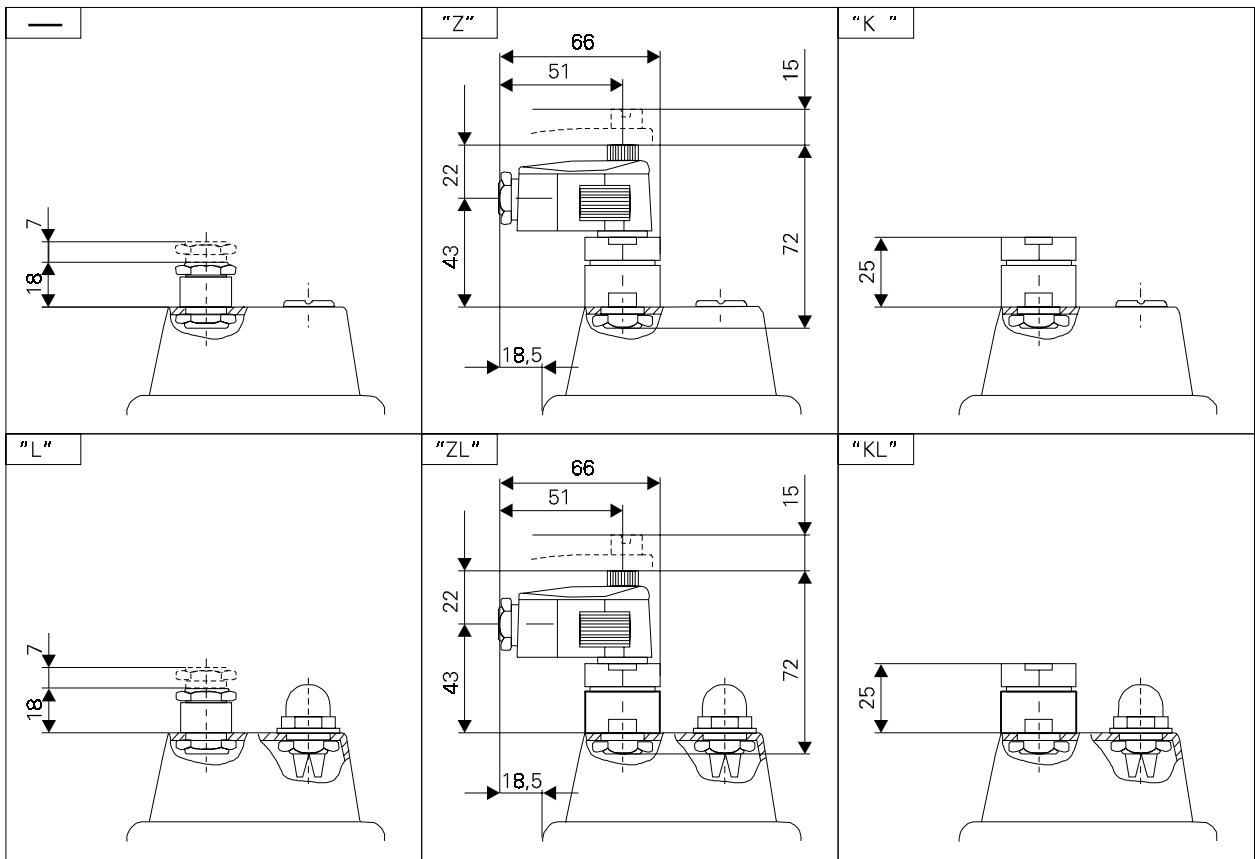
Note : Fixing bolts have to be ordered separately.

OVERALL AND CONNECTION DIMENSIONS

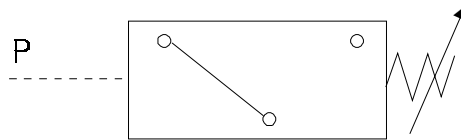


Overall dimensions and connector
 Item 1 - o-ring 5.3 × 2.4 - 1 piece
 Item 2 - Dumping tube (not included)

Electrical connection

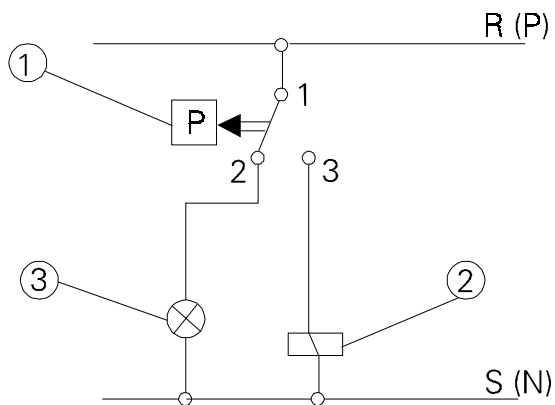


SCHEMES



Graphical symbol

Example of application



Simple switching with one HED

HOW TO ORDER

Orders coded in the way showed below should be forwarded to the manufacturer.



Series number
 31 = 31
 (30 - 39) - installation and connection dimensions remain unchanged

Maximum set pressure
 2.5 MPa = 25
 6.3 MPa = 63
 10 MPa = 100
 20 MPa = 200
 40 MPa = 400

Further requirements in clear text
 (to be agreed upon with the manufacturer)

Voltage of control light
 24 V = 24
 110 V = 110
 220 V = 220

Electrical connection
 Standard version = no designation
 Angled plug = Z
 Angled plug with light = ZL
 Central connector = K
 Central connector with light = KL
 Control light = L

Coding example : HED 20 A 31/200 KL 220



Q-HYDRAULIKA, Rakovník
Rabasova 2281, 269 01 Rakovník, tel./fax: 313 514 718
e-mail: info@q-hydraulika.cz, www.q-hydraulika.cz