



PRESSURE SWITCH TYPE USPH 1

**WK
450 175**

up to 35 MPa

04.1999r.

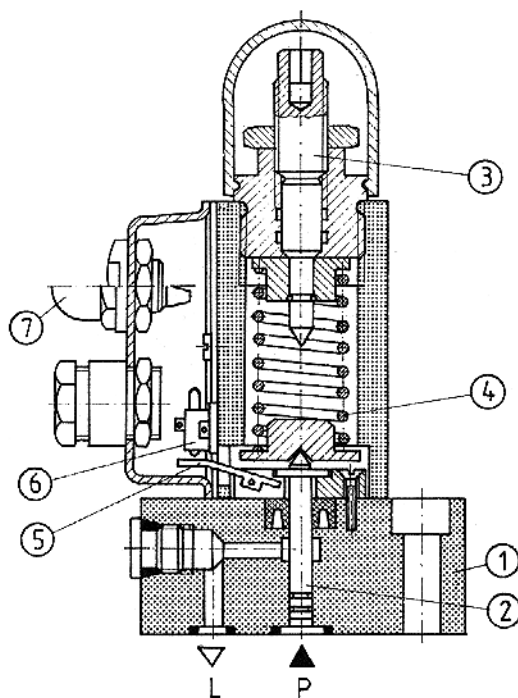
Pressure switch type USPH 1 serves to switch an electrical circuit on and off by means of a micro switch under the influence of pressure variations in relation to the set pressure.

The pressure switch may be used to control or monitor processes i.e. by means of a visual (light) or acoustic (bell) indicator.



DESCRIPTION OF OPERATION

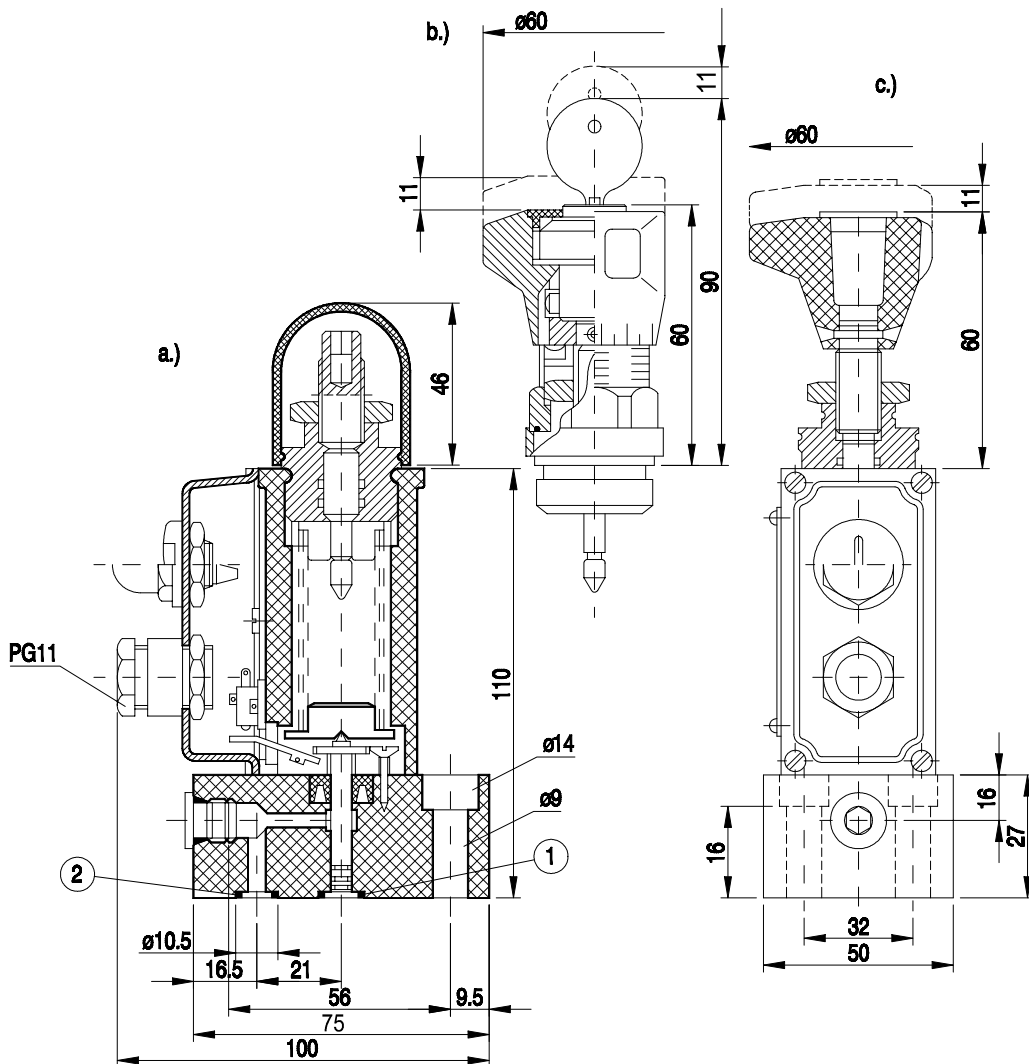
At initial state the piston 2 is held in its lower position by the spring 4 and causes the lever 5 to press the micro switch end 6. Pressure affects the piston which pushes against the spring 4 in the housing 1. The spring force is set by means of the adjustment screw 3 what results in adjusting the desired switching pressure. Switching state lasts as long as pressure force affecting the piston exceeds the spring force. As soon as pressure force decreases, the spring causes the piston to move downward. The piston pushes the lever and switches the micro switch to its initial state. Micro switch can be connected with the light 7 signalling switching on or off.



TECHNICAL DATA

Hydraulic fluid	Mineral oil or phosphate ester
Nominal fluid viscosity	37 mm ² /s at the temperature of 328 K
Viscosity range	2.8 to 380 mm ² /s
Optimum working temperature (fluid in a tank)	313 - 328 K
Fluid temperature range	243 - 343 K
Filtration	up to 16 μm
Maximum operating pressure	35 MPa
Switching repeatability	± 2.5 % of pressure setting
Maximum contact loading	5 A for AC voltage 250 V DC voltage 30 V
Insulation	IP 65 per PN/E-08106 (DIN 40050)
Weight	1.7 kg

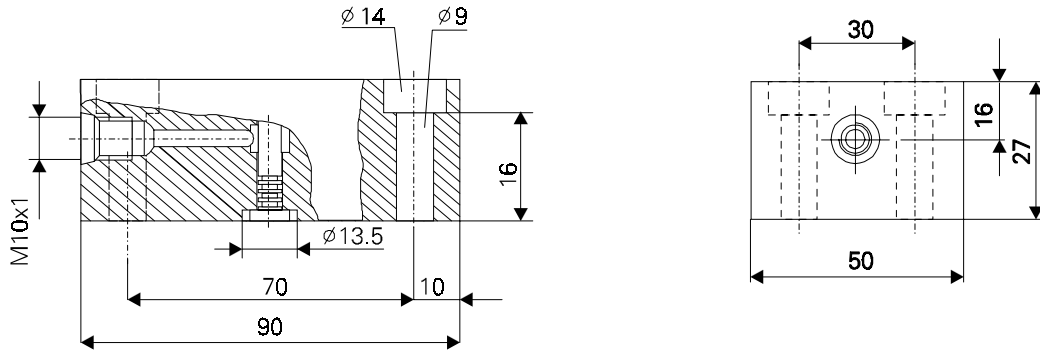
OVERALL DIMENSIONS



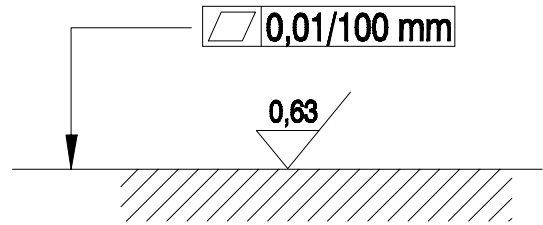
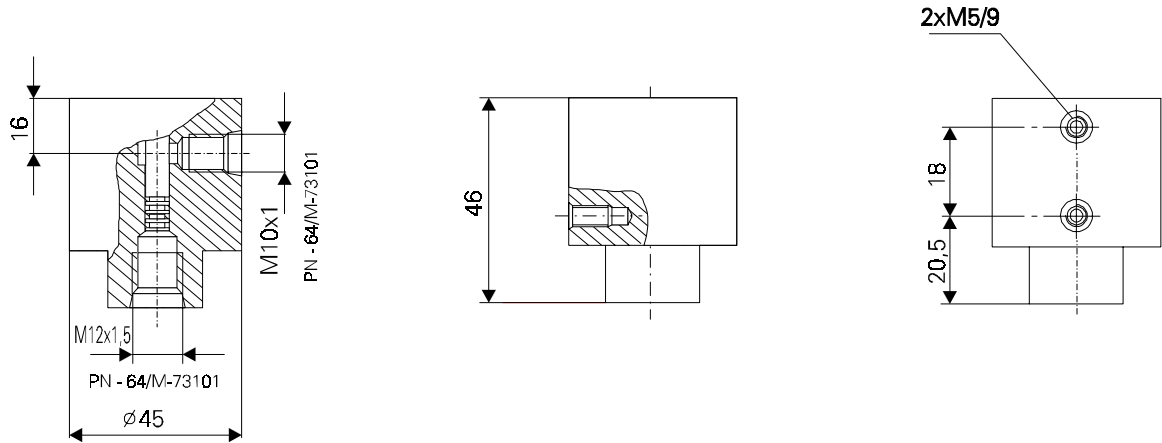
- a) setting element with adjusting screw „2”
- b) setting element with lackable handknob „3”
- c) setting element with hand knob „1”

- 1 - o-ring 10 × 2 - 1 piece
- 2 - o-ring 7 × 1.5 - 1 piece

Subplate mounting - 70 x 30 - „12”



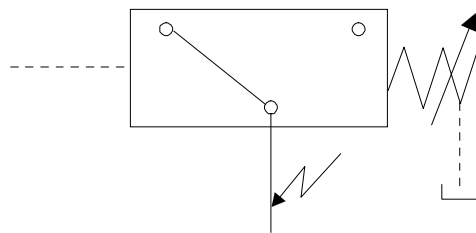
Threaded connections - „R”



Note : 4 fixing bolts M8 x 25 - 8.8 per PN/M - 82302 (DIN 912) must be ordered separately.

Admissible surface roughness and flatness deviation for a subplate face.

Graphical symbol



HOW TO ORDER

Orders coded in the way showed below should be forwarded to the manufacturer.

USPH 1 - / - - - -

<p>Series number 02 = 02 (00 - 09) - installation and connection dimensions remain unchanged</p>	<p>Voltage of control light 24 V = 24 110 V = 110 220 V = 220</p>
<p>Pressure range 10 - 35 MPa = 35 10 - 20 MPa = 20 0.5 - 10 MPa = 10</p>	<p>Accessories With no accessory = no code With control light = L</p>
<p>Mounting method For in-line mounting = R For subplate mounting = P</p>	<p>Sealing Oilproof rubber = no code Viton = V</p>
<p>Connection type Metric threaded connections (version R) = 00 Subplate 56 x 32 = 11 Subplate 70 x 30 = 12</p>	<p>Setting element Hand knob = 1 Adjusting screw = 2 Lockable hand knob = 3</p>

Coding example : USPH1 - 02/35 P 12 - 2



Q-HYDRAULIKA, Rakovník
 Rabasova 2281, 269 01 Rakovník, tel./fax: 313 514 718
 e-mail: info@q-hydraulika.cz, www.q-hydraulika.cz