



## CHECK VALVE TYPE UZZD 06 CARTRIDGE DESIGN

**WK  
450 270**

Size 6

up to 32 MPa

60 dm<sup>3</sup>/min

04.1999r.

Check valve cartridge are used in hydraulic systems, where free flow in one direction and self-acting closure in the opposite direction are required. These valves can be applied as low-pressure overflow valves for keeping pressure drop at a constant level.

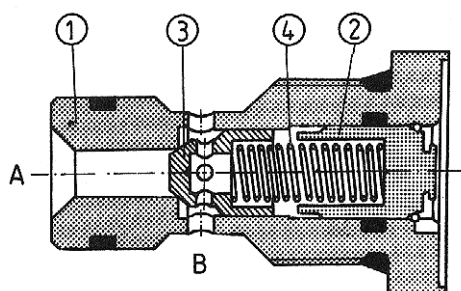
Valves can be installed in any desired position in special seats.

Sealing of interfaces is provided by O-rings which are included.



### DESCRIPTION OF OPERATION

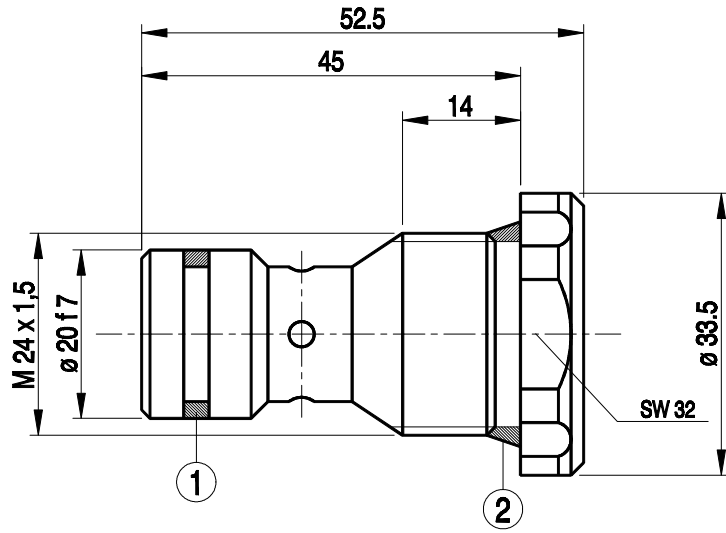
The plug 2 being simultaneously the seat for the spring is mounted in the sleeve 1. The spring pushes the poppet 3 onto the internal edge of the sleeve. If a pressure difference in port A exceeds the cracking pressure determined by the spring, the poppet will move along allowing free flow from port A to B.



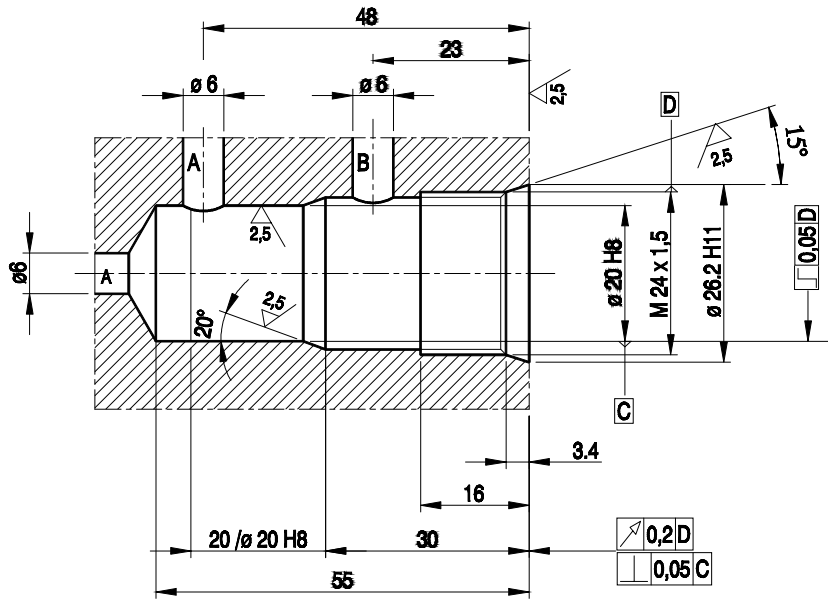
### TECHNICAL DATA

Hydraulic fluid	Mineral oil or phosphate ester
Nominal fluid viscosity	37 mm <sup>2</sup> /s at the temperature of 328 K
Viscosity range	2.8 to 380 mm <sup>2</sup> /s
Optimum working temperature ( fluid in a tank )	313 - 328 K
Fluid temperature range	243 - 343 K
Required fluid filtration	16 μm
Recommended fluid filtration	10 μm
Maximum working pressure	32 MPa
Cracking pressure	0.05; 0.1; 0.15 MPa
Weight	0.1 kg

# OVERALL DIMENSIONS

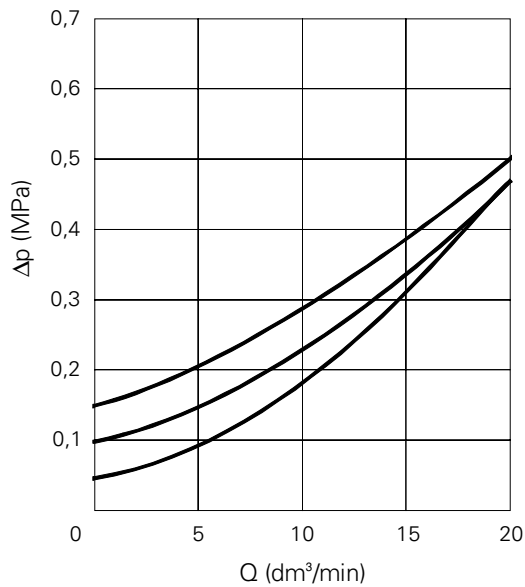


item 1 - o-ring 15.3 × 2.4 - 1 piece  
 item 2 - o-ring 21.3 × 2.4 - 1 piece



Seat dimensions ( torque for tightening the valve - 80 Nm )

## PERFORMANCE CURVES, measured at $v = 41 \text{ mm}^2/\text{s}$ and $T = 323 \text{ K}$



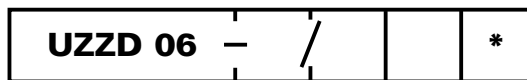
# SCHEME



Graphical symbol

## HOW TO ORDER

Orders coded in the way showed below should be forwarded to the manufacturer.



Series number :  
 11 = 11  
 (10-19) - installation and connection  
 dimensions unchanged

Additional requirements in clear text  
 ( to be agreed with the manufacturer )

Cracking pressure  
 Cracking pressure 0.05 MPa = 05  
 Cracking pressure 0.10 MPa = 10  
 Cracking pressure 0.15 MPa = 15

Sealing  
 Fluids on mineral oil base = no designation  
 Fluids on phosphate ester base = V

Coding example : UZZD 06 - 11/05



**Q-HYDRAULIKA, Rakovník**  
Rabasova 2281, 269 01 Rakovník, tel./fax: 313 514 718  
e-mail: [info@q-hydraulika.cz](mailto:info@q-hydraulika.cz), [www.q-hydraulika.cz](http://www.q-hydraulika.cz)