



# CHECK VALVE TYPE WZZC 10 SANDWICH PLATE

**WK  
450 367**

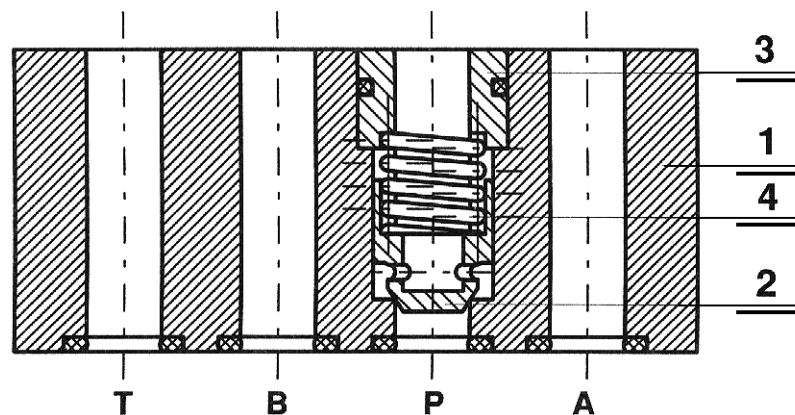
Size 10

up to 32 MPa

60 dm<sup>3</sup>/min

04.2000r.

Check valves of sandwich plate design are intended for mating with control valves. They allow free flow of fluid in one direction and self-acting closure in the opposite direction. Valves can be mounted in any position as an intermediate element between a subplate and a control valve.



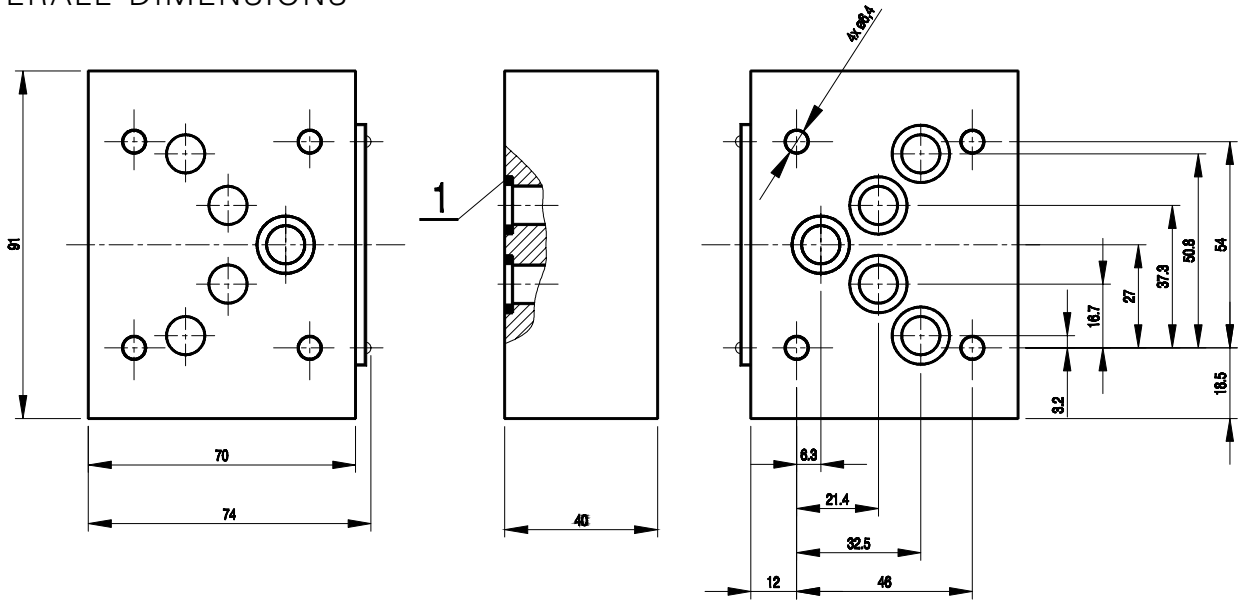
## DESCRIPTION OF OPERATION

The sleeve 3 with the seat for the spring 4 is fitted in the housing 1. The spring pushes the poppet 2 to the edge of port P in the housing 1. When pressure difference in port P exceeds the cracking pressure determined by the spring, the poppet will move allowing free flow in line P. Ports A, B, T serve as flow passages.

## TECHNICAL DATA

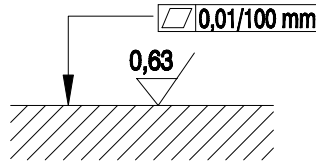
Hydraulic fluid	Mineral oil or phosphate ester
Nominal fluid viscosity	37 mm <sup>2</sup> /s at the temperature of 328 K
Viscosity range	2.8 to 380 mm <sup>2</sup> /s
Optimum working temperature ( fluid in a tank )	313 - 328 K
Fluid temperature range	243 - 343 K
Required fluid filtration	16 μm
Recommended fluid filtration	10 μm
Maximum working pressure	32 MPa
Cracking pressure	0.05 MPa
Weight	1.8 kg

# OVERALL DIMENSIONS

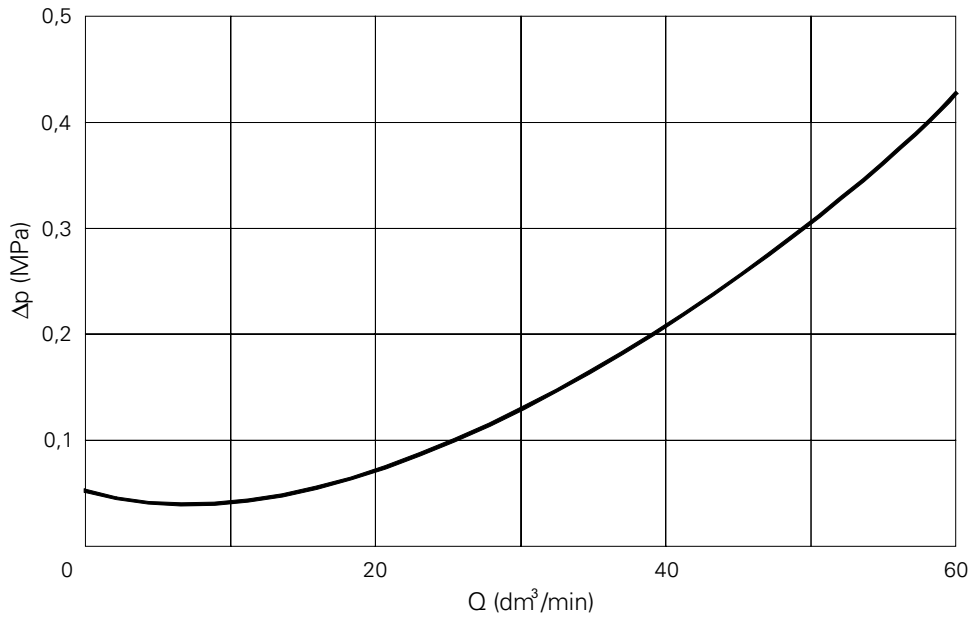


item 1 - o-ring 12 × 2 - 5 pieces

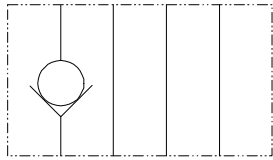
Admissible surface roughness and flatness deviation for a subplate face.



# PERFORMANCE CURVES, measured at $v = 41 \text{ mm}^2/\text{s}$ and $T = 323 \text{ K}$

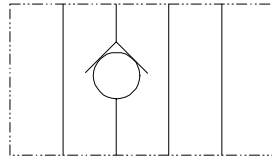


## SCHEMES



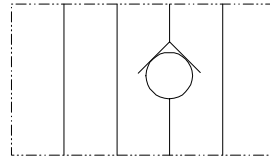
P A B T

WZZC 06-22 P



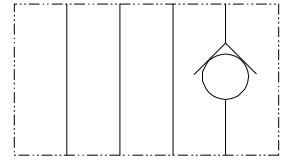
P A B T

WZZC 06-22 A



P A B T

WZZC 06-22 B



P A B T

WZZC 06-22 T

## HOW TO ORDER

Orders coded in the way showed below should be forwarded to the manufacturer.

**WZZC 10** - / \*

Series number :  
 20 = 20  
 (20 - 29) - installation and connection  
 dimensions unchanged

Additional requirements in clear text  
 ( to be agreed with the manufacturer )

Sealing  
 Fluids on mineral oil base = no designation  
 Fluids on phosphate ester base = V

Coding example : WZZC 10 - 20

NOTES :



**Q-HYDRAULIKA, Rakovník**  
Rabasova 2281, 269 01 Rakovník, tel./fax: 313 514 718  
e-mail: [info@q-hydraulika.cz](mailto:info@q-hydraulika.cz), [www.q-hydraulika.cz](http://www.q-hydraulika.cz)